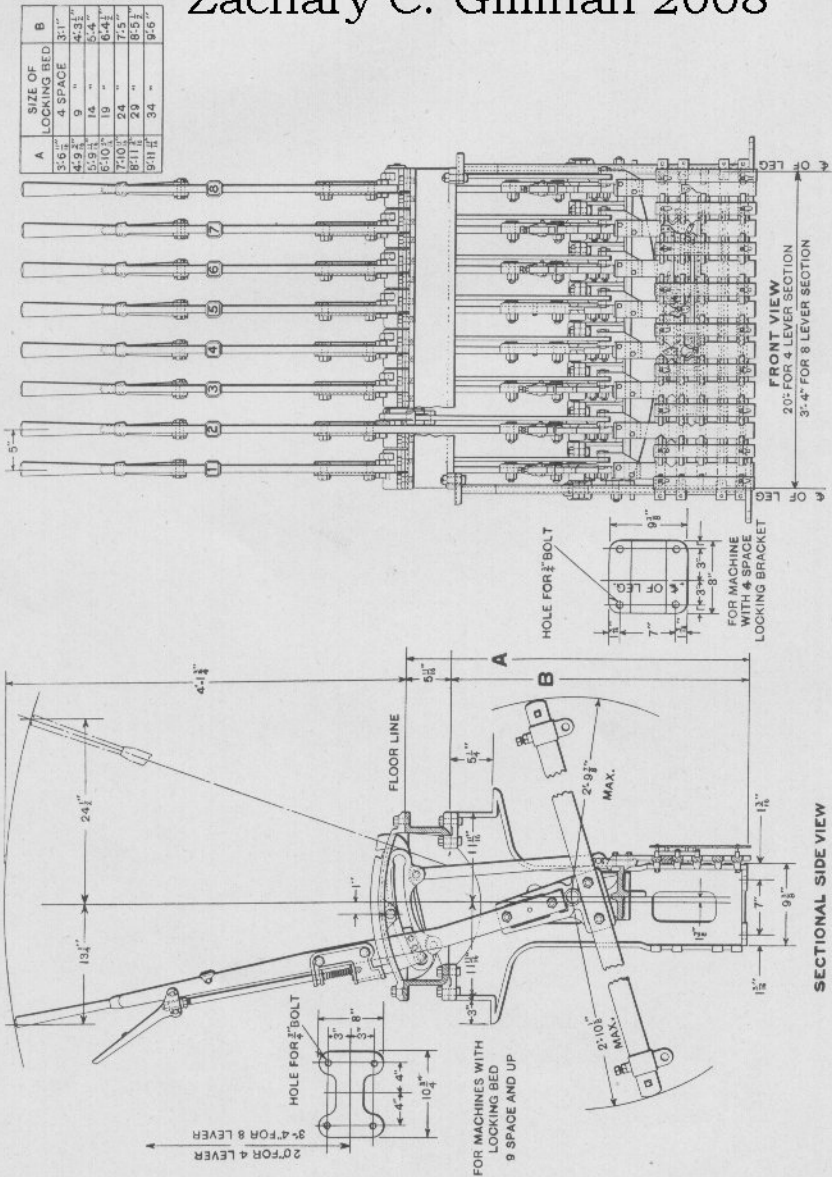


UNION SWITCH & SIGNAL COMPANY

Zachary C. Gillihan 2008



UNION SWITCH & SIGNAL COMPANY

THE STYLE "A" INTERLOCKING MACHINE

When ordering Interlocking Machines, a signaled track plan should be furnished, drawn to a scale of not more than one hundred feet to the inch.

The plan must show the location of the tower and the relation of the front of the machine to the track, (the front of a machine is that part occupied by a man when operating the levers), also the route or routes to be governed by each signal, and the kind of connections, (whether pipe or wire), which will be employed by the latter. If any combinations in the locking are required which would not ordinarily be included, they should be called for in the order, or a locking sheet furnished in addition to the above information. Order should clearly state the number of levers and spare spaces.

Machines complete include locking, jaws, shackles, pins, bolts and cotters.

Order by Plate, Piece, Reference and Abbreviated Description Given in Heavy Face Type Only.

Drawing references are shown for convenience in checking material with shipping lists and invoices.

| Style "A" Interlocking Machine, complete with Working Levers and Spare Spaces | | | |
|---|------|--|-------------------|
| Piece | Ref. | Description | Drawing Reference |
| | A | Four to twelve lever frame..... | D-897-6 |
| | Aa | Sixteen to twenty-four lever frame..... | D-897-6 |
| | Ab | Twenty-eight to forty-eight lever frame..... | D-879-6 |
| | Ac | Fifty-two to seventy-two lever frame..... | D-897-6 |
| | Ad | Seventy-six to one hundred lever frame..... | D-897-6 |